

PART OF THE S.W. 1/4 OF SEC 16 & THE N. 1/2 OF SEC. 21, T.6N., R.2E., S.L.B. & M.

97

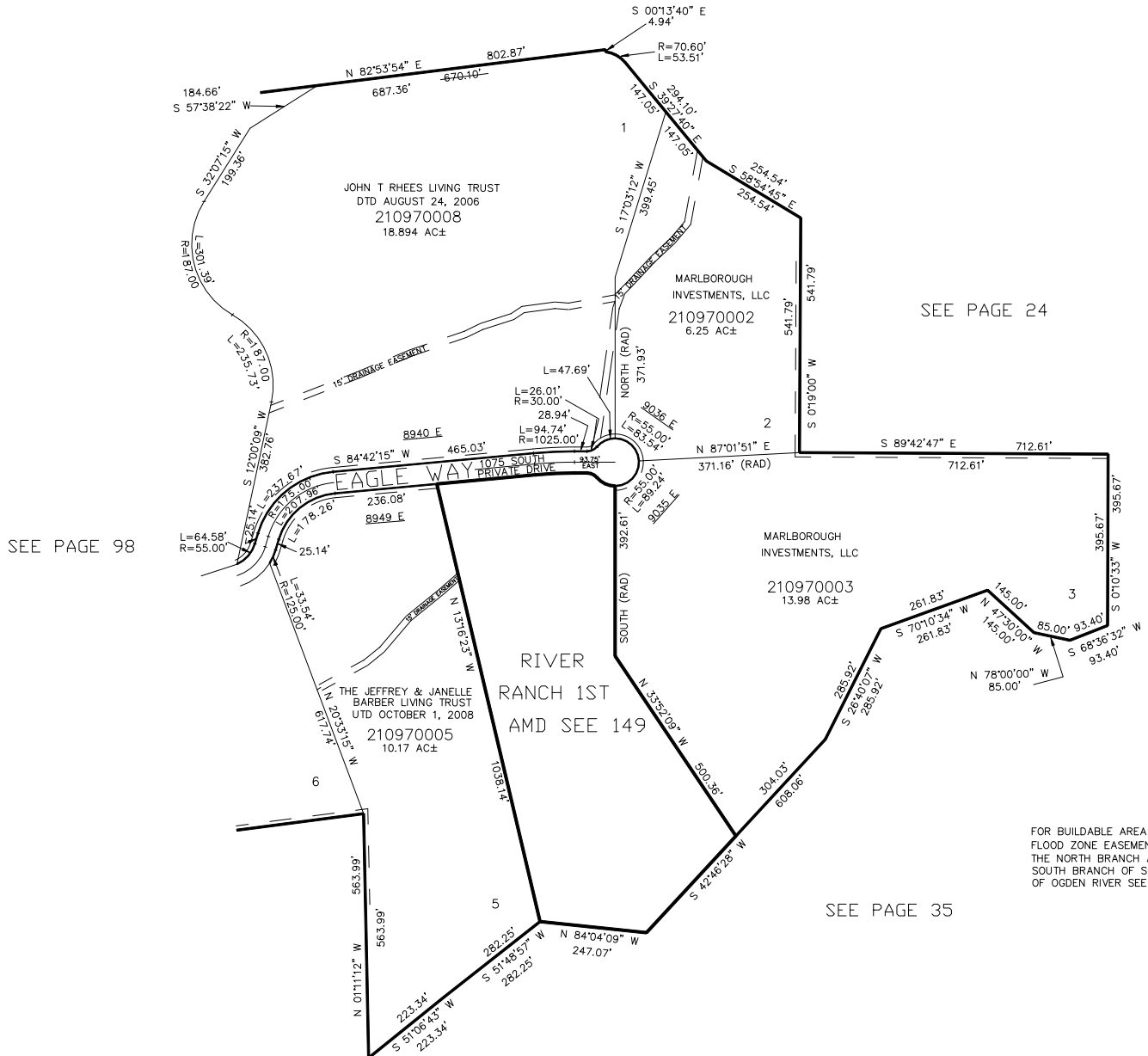
# RIVER RANCH

IN WEBER COUNTY

TAXING UNIT: 520

SCALE 1" = 200'

SEE PAGE 24



SEE PAGE 98

SEE PAGE 24

SEE PAGE 35

10' UTILITY & DRAINAGE EASEMENTS EACH SIDE OF PROPERTY LINES AS INDICATED BY DASHED LINES EXCEPT AS OTHERWISE SHOWN.

FOR COMPLETE ENG DATA SEE ORIGINAL DEDICATION PLAT IN BOOK 58, PAGES 33 & 34 OF RECORDS.

FOR BUILDABLE AREA AND FLOOD ZONE EASEMENT AND THE NORTH BRANCH AND THE SOUTH BRANCH OF SOUTH FORK OF OGDEN RIVER SEE DED PLAT.